

# Low Temp Incubator

## 저온배양기



### Features

- Fuzzy function to prevent overheat.
- Accurate temperature controls by Digital PID controller.
- In case of temperature sensor disconnection, error message appear.
- In case of difference between real temperature and appeared temperature, user can adjust correctly.
- When controller setting value is changed by the mistake of operation, save and recall function can restore it easily.
- User can adjust temperature not to raise up certain degree from installed temperature.
- Uniform airflow by blowing fan in the chamber.
- Internal tempered glass and easy observation of the test materials
- by opening the external door only.
- Cable hole to use external measurement equipment.
- STS #304 used in inside chamber for durability.
- Freezer frost removal function be selected manually for the safety of samples.

### Specifications

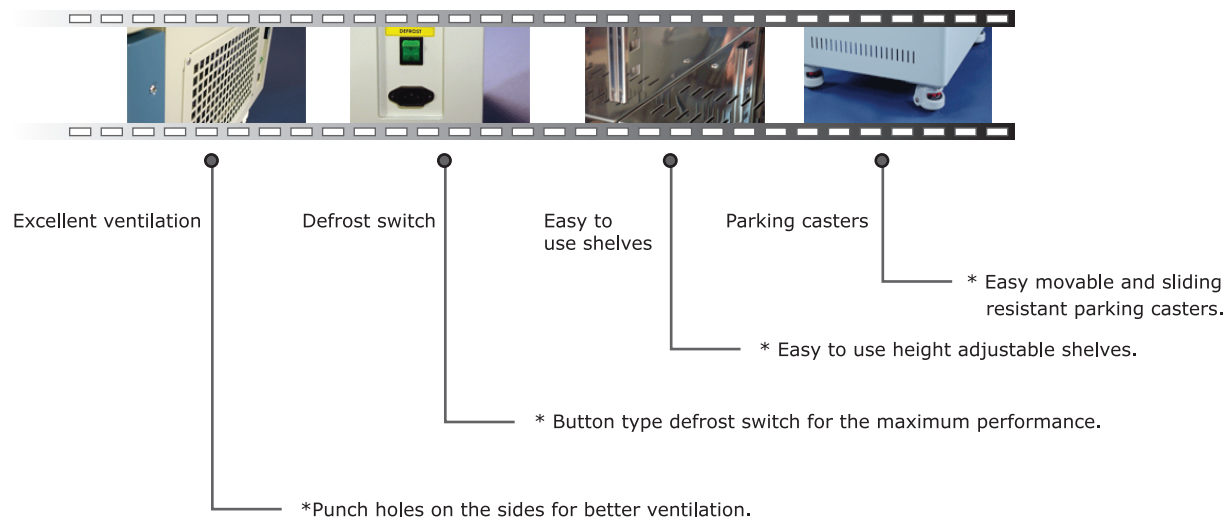
Made in Korea

Spec. / Model		BI-81	BI-150	BI-250
Type		1 door		
Temp	Range	-0°C ~ 60 °C		
	Controller	Digital PID Controller		
Size	Internal (WxDxH, mm)	450x400x450	500x500x600	500x500x1000
	External (WxDxH, mm)	615x650x1040	665x765x1190	665x765x1590
Safety	Electrical	ELB(Earth Leakage Circuit Breaker)		
Material	Internal	Stainless steel #304		
	External	Steel, Powder coating		
	Shelves	STS #304 Wire Electro-Polished		
	Heater	Sheath Heater		
	Insulation	Atron		
	Door Packing	High Temperature grade foamed silicone rubber		
	Windows	Tempered Safety Glass		
Refrigerator		1/4HP	1/4HP	1/3HP
Electric Requirements		220VAC. 50/60Hz		
Power Consumption		900W	900W	900W

## Low Temp Incubator (B.O.D)

저온배양기

### Distinction



### Structure

